

Dog Waste Stations Project Report

November 11, 2020

The Red Dot Association of Shediac Bay

Marshlands on Parlee Beach



Submitted November 11, 2020 by:

Andy Malolepszy

Pierre Wedge

Helen Wedge

Art Melanson

Trudy Brydges

Purpose:

In 2017 the Department of Environment and Local Government's Ministerial committee asked the Red Dot Association to help control dog waste near Parlee Beach and surrounding areas. In its investigations, dog waste was found to be one of the contaminants contributing to water quality issues along the beaches of Shediac Bay.

Station Installations:

A dog waste station prototype was designed by members of the Red Dot Association in April 2017 and once approved by DELG, fifteen (15) stations were installed in Pointe-du-Chene and an additional ten (10) stations were added in Beaubassin-Est, Aboujagane, Cormier Village and Cap Pelé. A local resident was hired to do weekly maintenance on the stations. This involved emptying the bins and replenishing bags as needed each week. The bins were removed, cleaned and stored for the winter as part of the maintenance.

Our partners (Baubassin-Est Council, Pointe-du- Chêne LSD, Pointe-du- Chêne Wharf, Parlee Beach Park, Vision H2O and local campgrounds) selected entrances to the beaches, nearby trails and at the Pointe-du- Chêne Wharf. All contributed to the maintenance of these stations by reporting any issues to the Red Dot Association who responded quickly to rectify any problem which, incidentally, were limited to 3 stations only.

The dog waste project has completed its 4th year and once again has proven to be effective and appreciated. The usage of these stations has increased each year due to their popularity and convenience. Clean trails and beach areas are what people want and expect. The stations collected 9445 poop bags or approximately 7083 lbs over the summer. .

A huge thank you to staff at Parlee Beach Provincial Park, Ocean Surf Campground and Pointe-du- Chene Wharf for helping to pick up the waste and also for storing the stations.

Summary:

It is felt that the stations were well used again this summer based on the number of dog waste bags used and the fullness of bins on garbage pick-up days. Due to COVID 19 restrictions there was less interaction with the public regarding feedback however several dog owners expressed their thanks from a distance.

The Red Dot Association would like to thank the public for using these stations which helped to keep the beaches and trails cleaner.

As an association we are proud of this successful initiative but feel it is time for this project to be handed over to another organization. We are however, committed to providing this service for the upcoming 2021 season. It is our hope that permanent funding and staffing will ensure the future and continuity of this seasonal service.

Recommendations for 2021:

- Provide this seasonal service on a permanently funded basis.
- Continue to promote the use of these dog waste stations through educational material, social media and collaboration with other environmental groups in the area.

Comments:

“Oui, je confirme que les stations de traitement des déchets de chiens remplissent bien leur fonction dans notre parc provincial de la plage Parlee. Je soutiens le programme et encourage sa continuité. Je suis convaincu que ces stations contribuent à la propreté et qualité de nos espaces. »

Michel Mallet, Gestionnaire, Parc Provincial de la plage Parlee

« Sorry about the delay. I visited the trail the day after you called me and all of the waste stations had been taken down so I couldn't assess if there was any overlap between those installed by Beaubassin-est and your group but assume that both are operating smoothly because the trail is so popular and now hundreds of local school children walk the trail with their teachers as part of the curriculum. I would say in the report that the stations continue to serve an important need by keeping the trail clean and tidy despite an increasing number of users. »

Michael Chadwick, President Vision H2O, Beaubassin Est

“We continue to be very pleased, and proud, of the dog waste station program in our community. The stations are obviously used regularly with near elimination of dog waste, in and out of bags, tossed aside as compared to pre-program. The trash bags should be clear as dog waste is trash, not green bags which are for composting. One item for the team for next year - the station at the bottom of Second Avenue should be moved to the right a bit (to either in front of the hydro pole or to its right) as it continues to obstruct a century old path to the beach from the road. Again, our appreciation for this important service to everyone.

C F (Chuck) Steeves, Chair/Président, Advisory Committee of the Local Service District of Pointe-du-Chêne, Chair Strategic Committee / Past Chair (2016-17) Board (of Mayors & Chairs), South East Regional Service Commission New Brunswick Canada

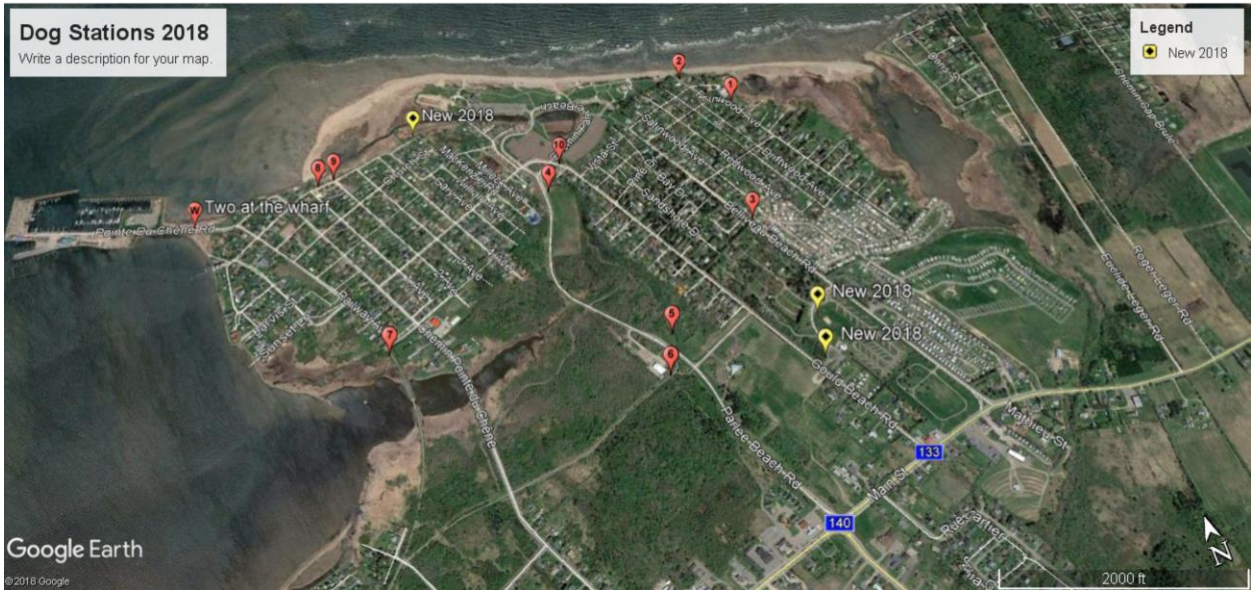
“The dog stations seem to be doing a good job. They are being used regularly by people walking their dog. At the moment, I don't really have specific areas where to install more. One suggestion I would have is to keep the bins a bit longer in the fall. We still have days that are nice to go for a walk, and people would certainly use them to put their trash.”

Julie Cormier, Directrice générale, Vision H2O

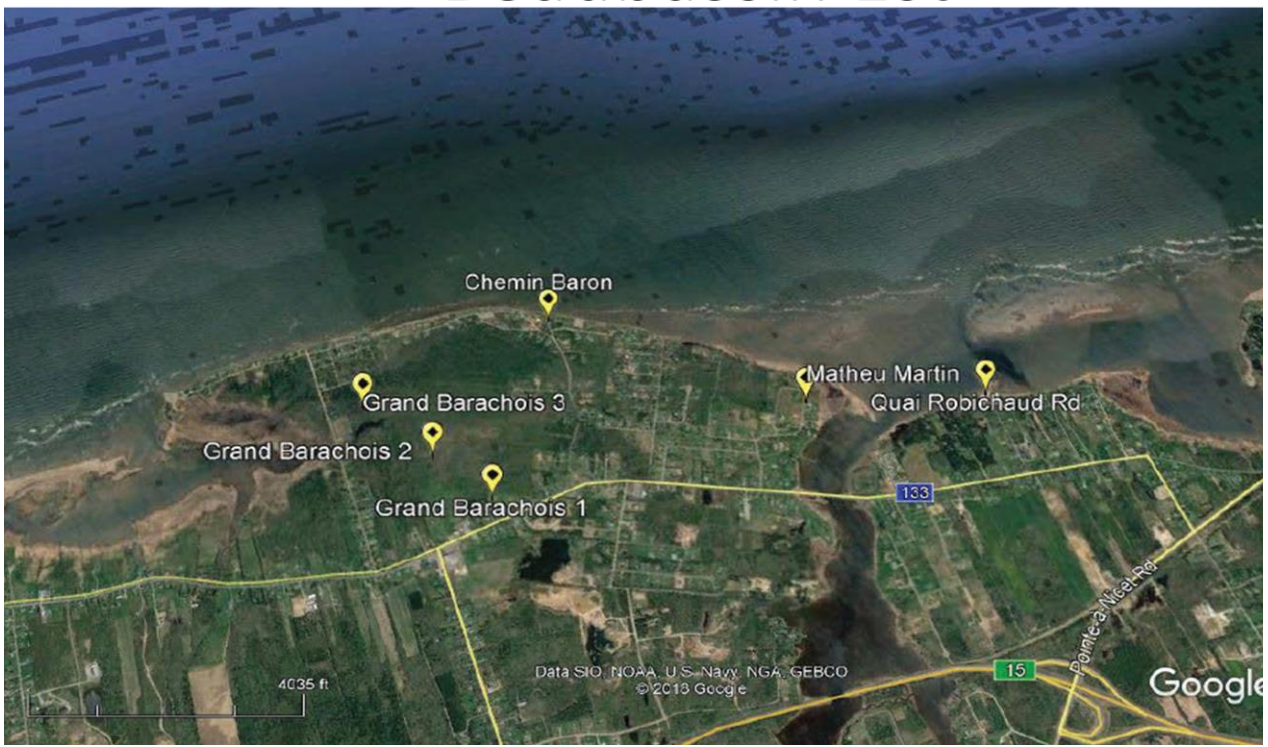
Partners:

- Pointe-du-Chene Local Service District
- Pointe-du-Chene Wharf
- Parlee Beach Provincial Park
- Ocean Surf Campground
- Vision H2O
- Community of Beaubassin-Est

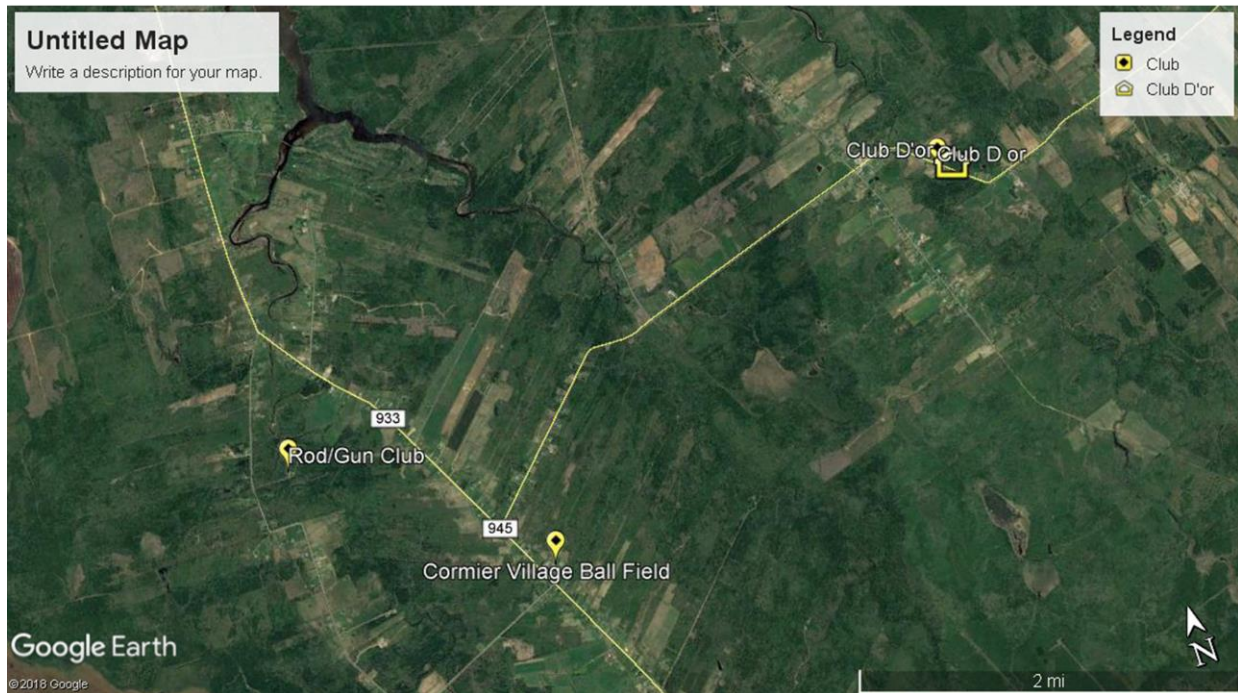
Pointe-du-Chene, Shediac



Beaubassin Est



Aboujagane and Cormier Village



Le Baron



Beliveau Beach Entrance-Fernwood



Provincial Park - Parlee Beach Rd.



Beliveau Beach Entrance-Driftwood



Cormier Village trail



Trail in Barachois by church and community centre

